

[Impact Crushers. HPI]

HAZEMAG

**Experience.
Innovation.
Results.**

Crushing | Screening | Feeding

Primary Impact Crusher

Crushing of medium-hard rock and building rubble recycling

- Very high crushing degree of large rocks at high throughput rates
- Choice of hydraulically-actuated impact aprons or HAZtronic electronic control system



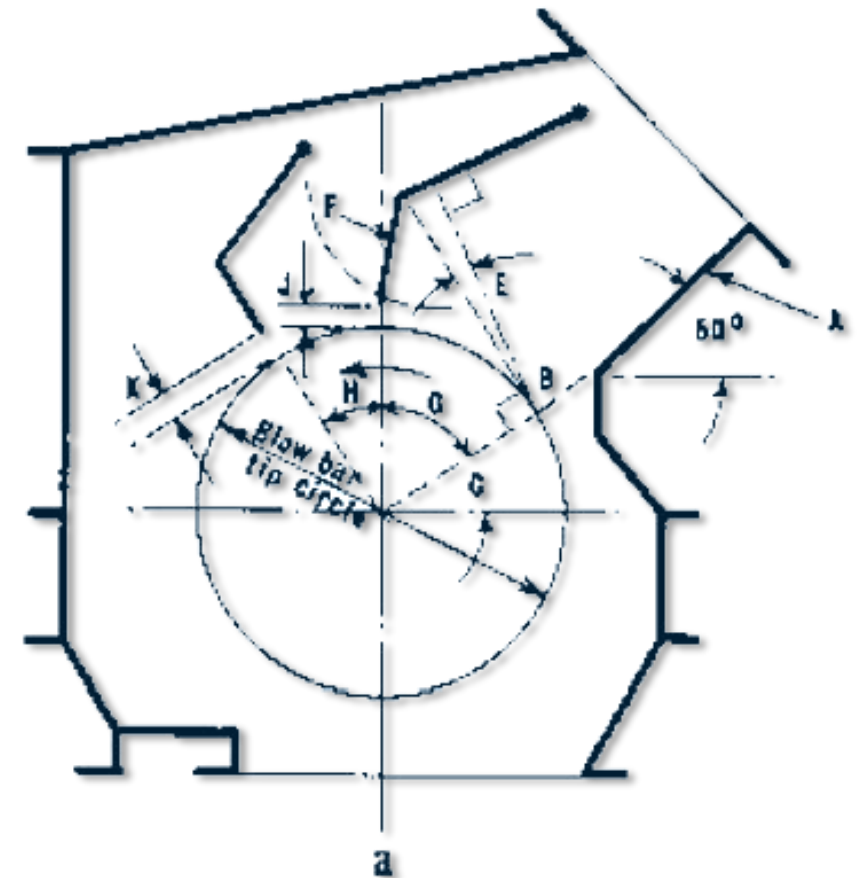
Application

- Cement & aggregate industry
- In the aggregate and recycling industry, the HAZEMAG Impact Crusher is used in the pre-crushing role without a grinding path
- In the cement industry the HPI is also used with grinding path, for the production of raw material with an ideal grain size distribution for further grinding in vertical roller mills
- Feed material up to 3m³



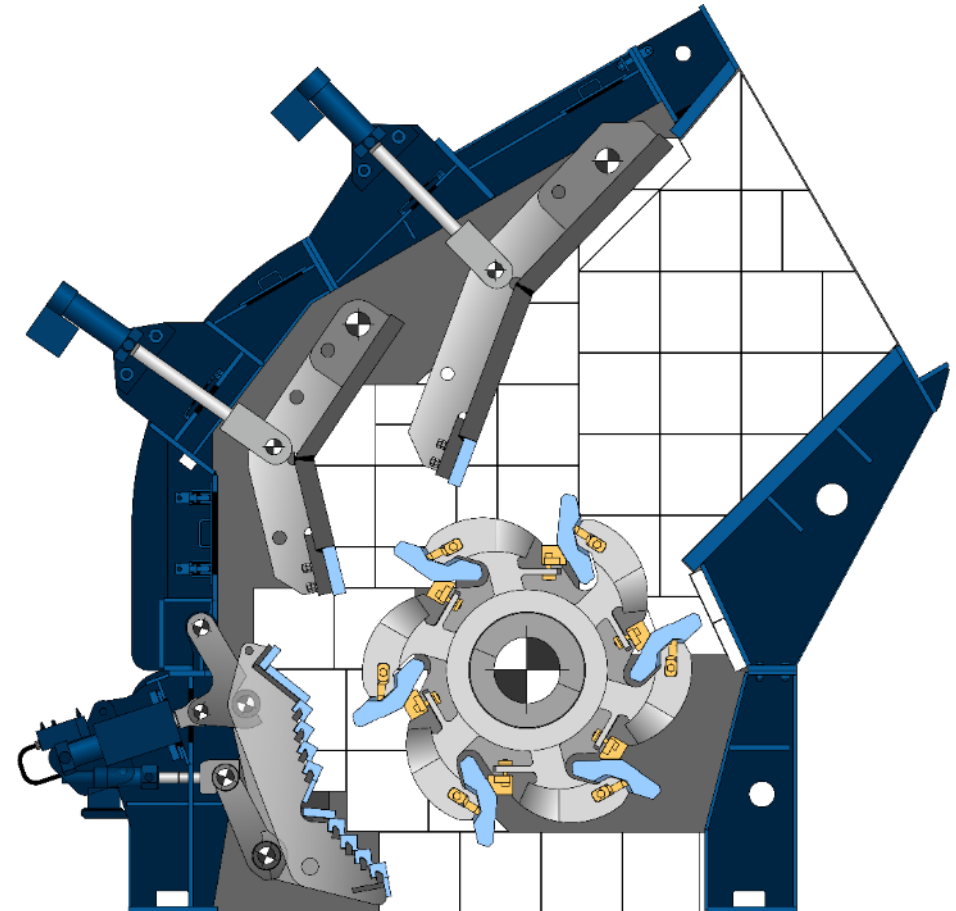
Operation Method

- The “Andreas System” was designed with two gravity hung impact aprons. Today hydraulic or spring supported aprons are commonly used
- This design created two impact chambers assuring high ratios of reduction
- Reduction of the feed materials was achieved by true impact



Equipment

- Two impact aprons
- Optional grinding path (Grinding path restricts the amount of oversize)
- Gap setting of impact aprons and grinding path can be varied by means of spindles or via hydraulic cylinder



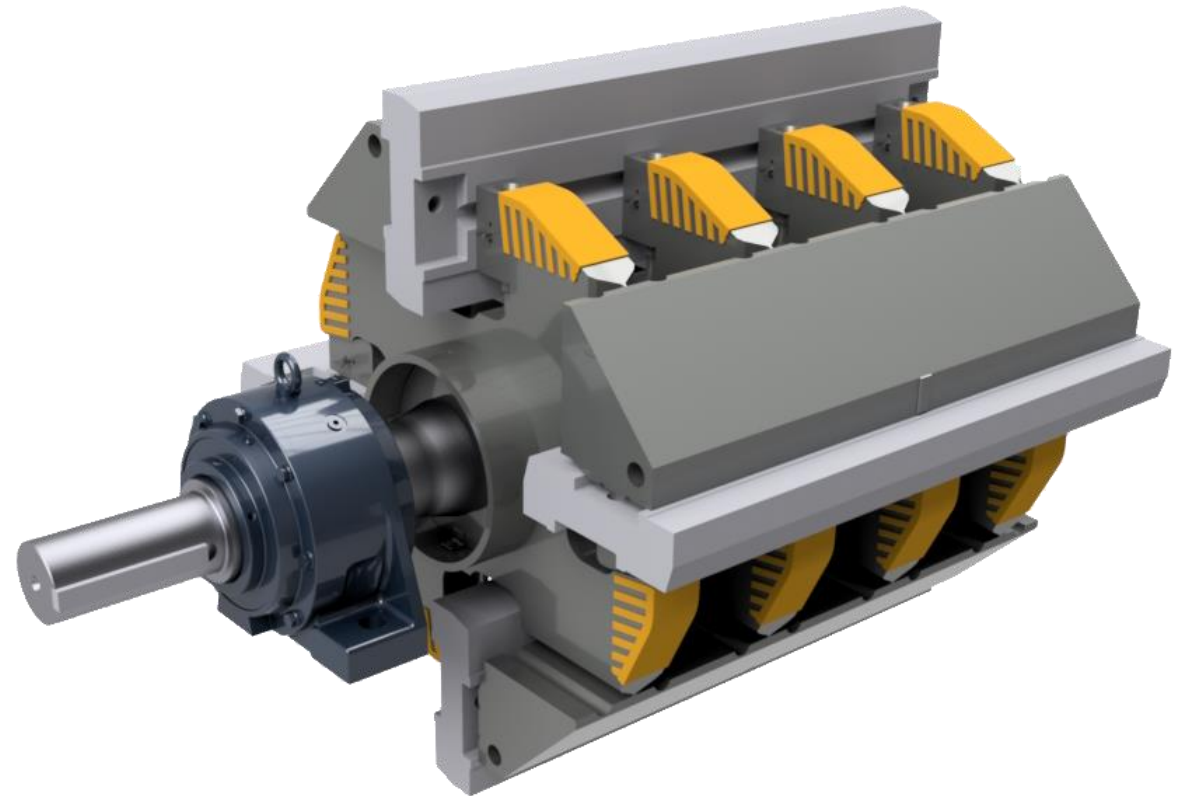
GSK-Rotor

- Patented HAZEMAG rotor design
- Cast and welded steel construction
- With individual cast rotor discs welded to the rotor body to accommodate the proprietary blow bars as primary crushing implements
- Blow bars are locked in position in the holders by means of wedges
- Wedges can be easily removed for blow bar changing



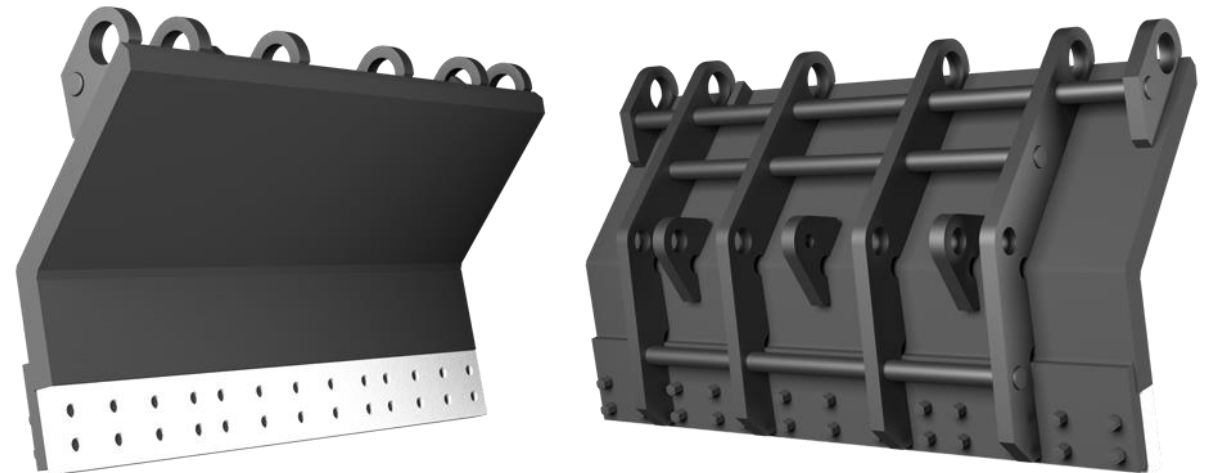
QB-Rotor

- Rotor discs are welded together with rugged holding beams to provide the backbone for the blow bars
- Blow bars are secured to holding beams by means of wedges
- Wedges can be removed easily for blow bar changing



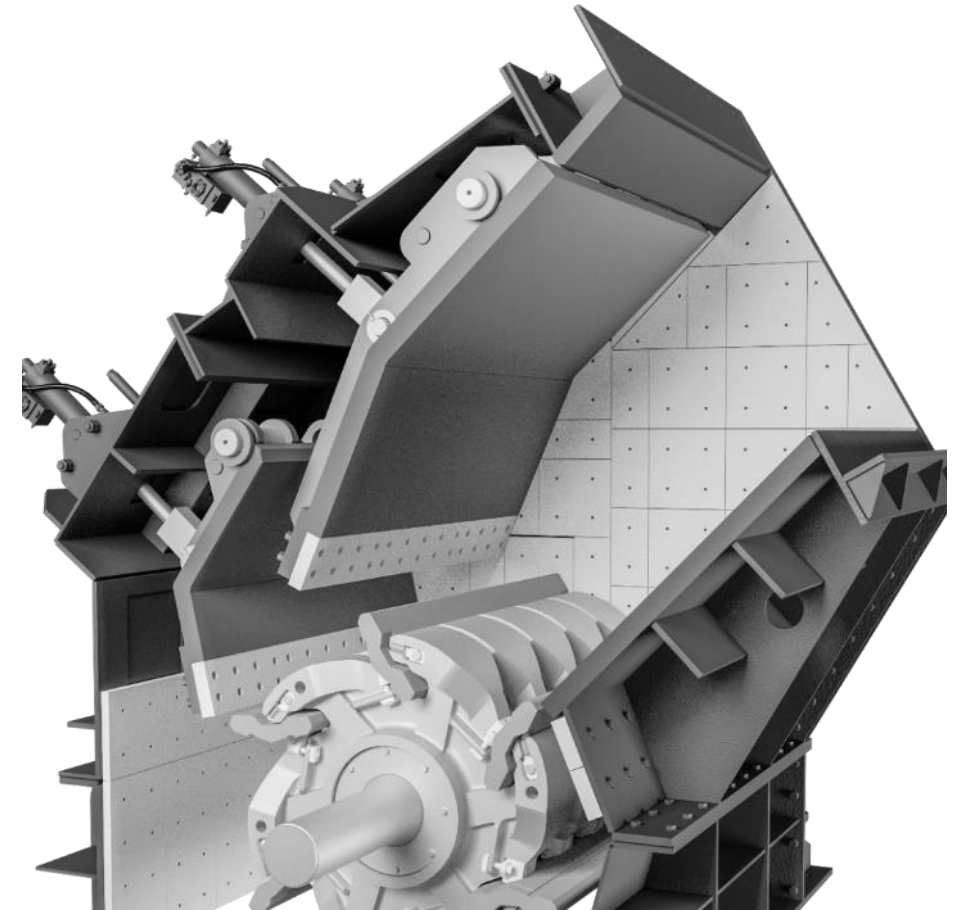
Retracting Mechanism

- Ensures protection of rotor body and blow bars
- Mechanical system
 - Impact apron is held in position by means of a thrust device with pressure springs
 - Spindle adjustment by auxiliary hydraulics



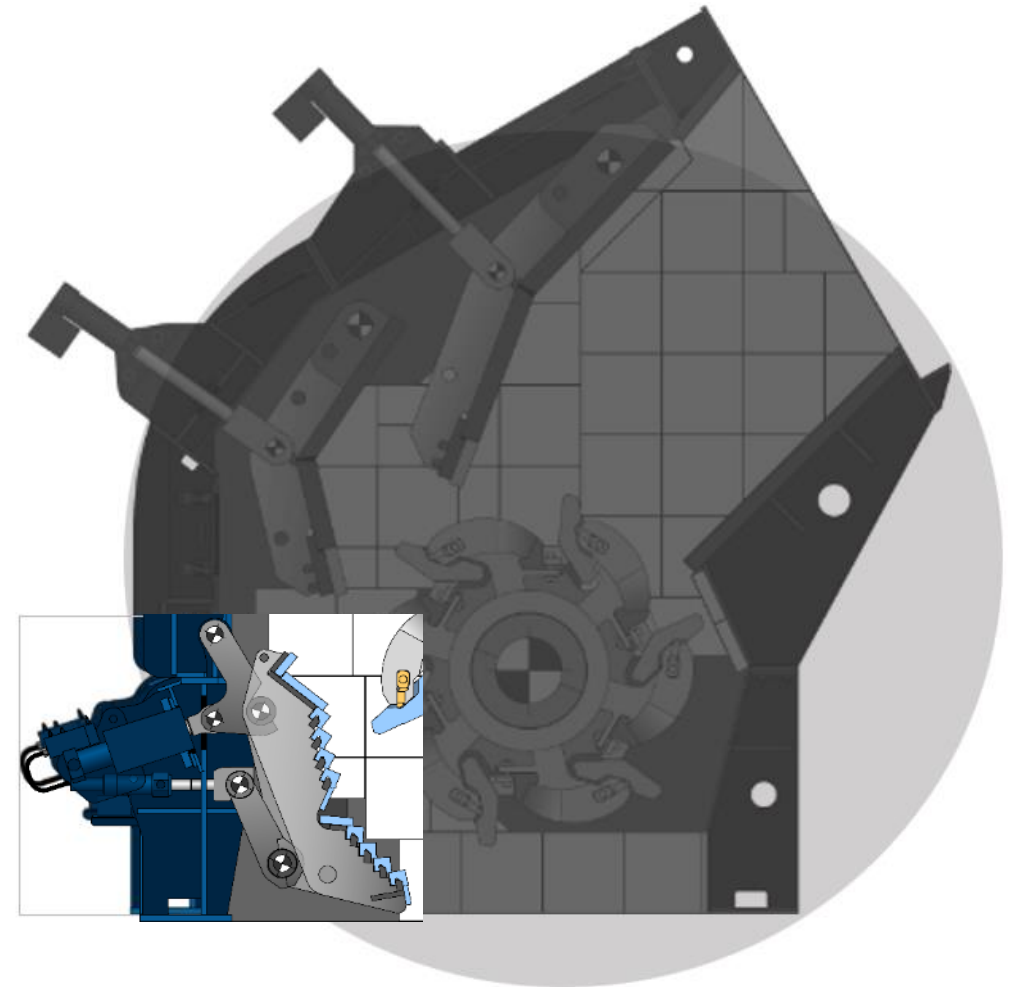
Retracting Mechanism

- Hydraulic system
 - Impact aprons are retained by hydraulic cylinder
 - Adjustment and securing (at the touch of a button)
 - Retracts in a controlled manner, in case of overstepping the pre-set limited value in crushing chamber
 - At normal load value the impact apron automatically resumes its pre-set position (operation without interruptions)
 - HAZtronic electronic control system for production selection of computer stored recipes according to requirements (optional)



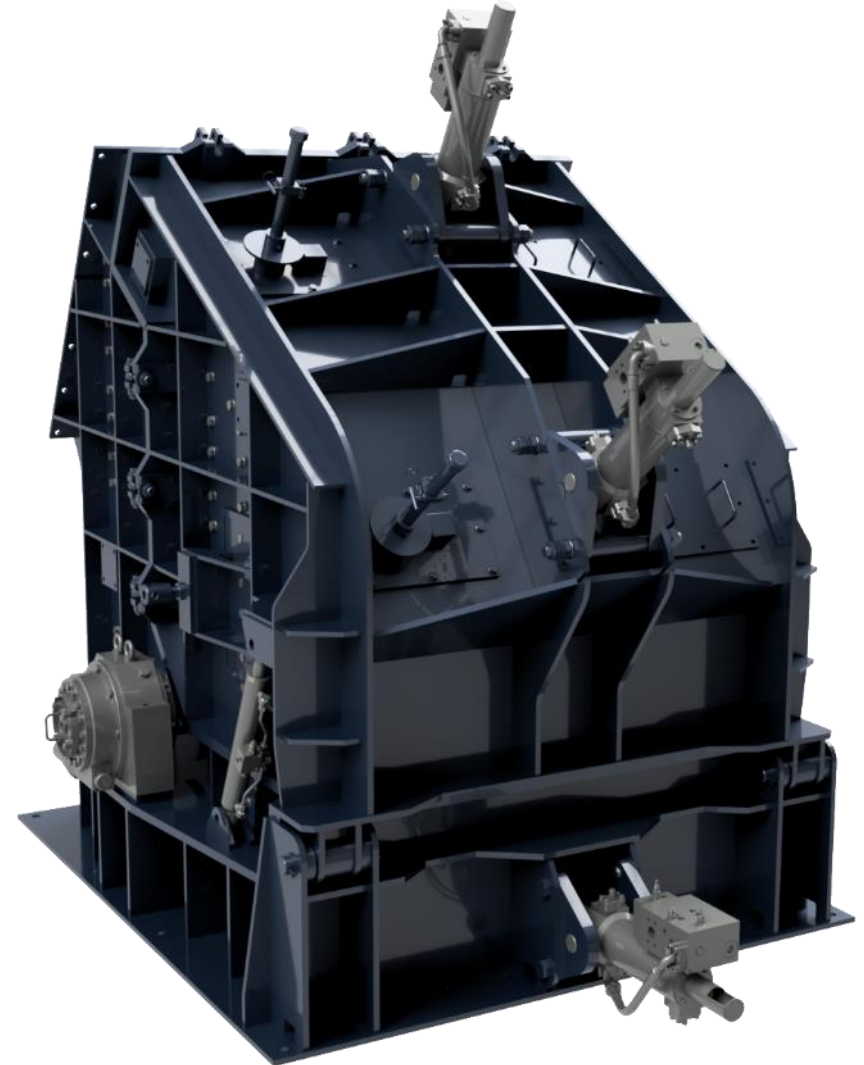
Grinding Path

- HPI and HPI-H may optionally fitted with a grinding path, ensuring an oversize limitation
- Adjustment of the grinding path is effected hydraulically
- Retractable Grinding Path
 - The HPI series can optionally be fitted with a retractable grinding path, which allows the retraction in case of an overload condition



Hydraulic Features

- If material jamming in the crushing chamber, impact aprons can be raised hydraulically
 - Material can pass through the gap
- Gap reverts automatically to its original setting
- Impactor does not have to be cleared
 - Avoiding costly stoppages and safety issues





hazemag.com

Copyright ©2023 HAZEMAG. All rights reserved.
This document makes no offers, representations or warranties (express or implied),
and information and data contained in this document are for general reference only
and may change at any time.

